



HEREFORD HILL
• LOCHINVAR •

emerge
COLLECTION



 **LOT 523**
HEREFORD HILL
LOCHINVAR, NSW

OAKVIEW 206 | METRO

    
4 Beds 2 Baths 2 Parks 22.2 Squares 18.73m Wide

Land Size: 615m²

\$750,000
Including Land



*Achievable
price without
sacrificing
quality*

HOUSE AND LAND PACKAGE INCLUDES:

- ✓ Designer Kitchen
- ✓ Quality appliance package
- ✓ Split-system air-conditioning
- ✓ Premium anti-mould and bacteria resistant internal wall paint
- ✓ Complimentary electrical planning
- ✓ PGH/Austral bricks and concrete roof tiles
- ✓ Hume front entry door
- ✓ Internal floor coverings
- ✓ Insulation

Sales Executive

Tannah Morris | 0411 025 596
tannah.morris@montgomeryhomes.com.au


26
WEEK

CONTRACT
BUILD TIME

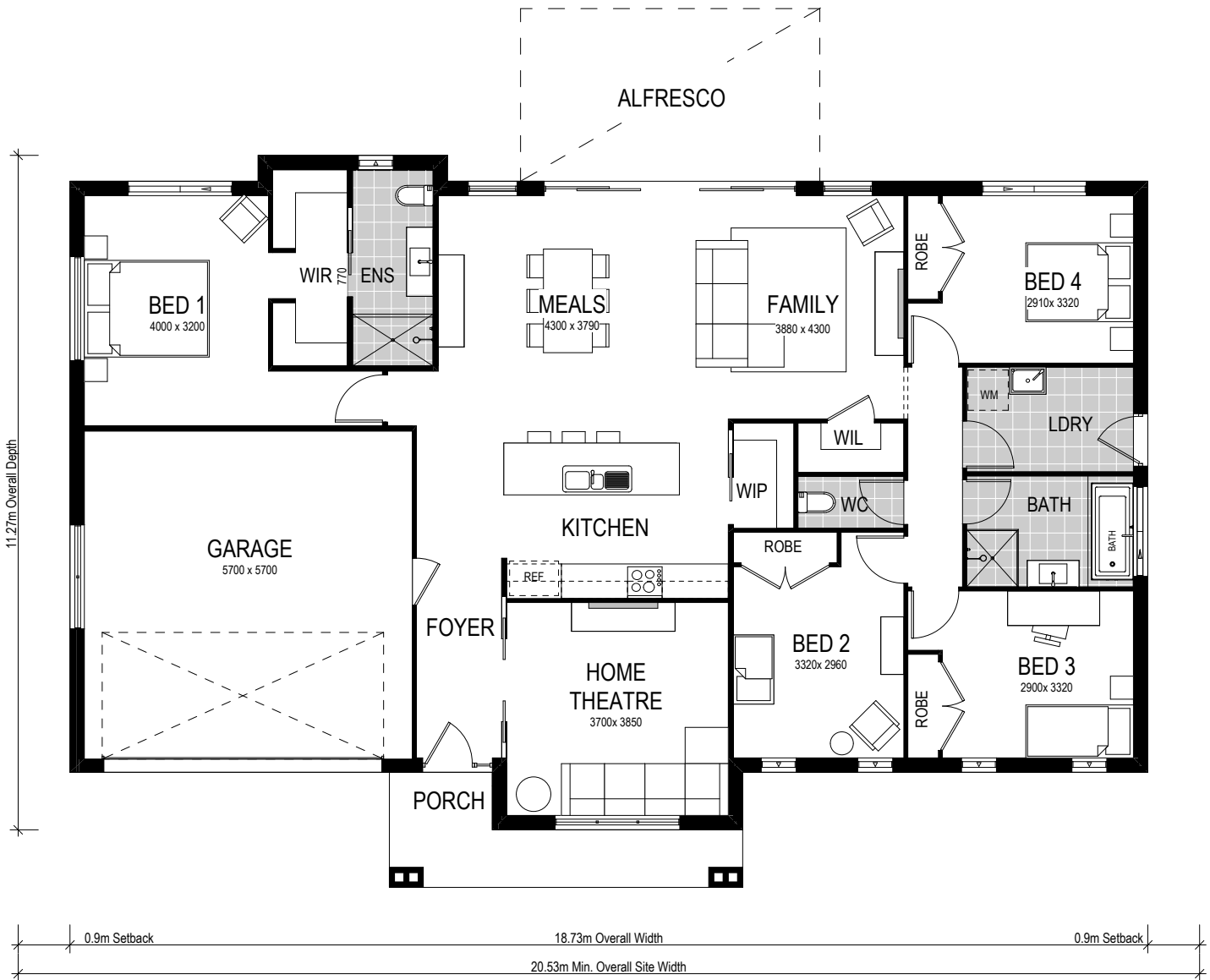
OAKVIEW 206 | METRO

 4 Beds
  2 Baths
  2 Parks

Perfect for growing families and for entertaining groups of friends, the Oakview 206 features an open-plan kitchen with a generously sized walk-in pantry. An optional alfresco stems from the meals and family zone, perfect for summer night BBQs. Equipped with four bedrooms, two living areas and two bathrooms, the Oakview 206 seamlessly tucks away the master bedroom from the rest of the home which includes an oversized walk-in-robe and ensuite. Easily accessible from the main living areas, the laundry provides ingress to the backyard for convenience.



- ✓ Move in sooner
- ✓ Simplified selections
- ✓ Fixed site costs
- ✓ Interior and exterior inclusions
- ✓ First home buyer appeal



CONDITIONS APPLY This is not a final tender. Montgomery Homes reserves the right to revise plans, pricing and specifications without obligation or notice. Pricing is subject to Council and statutory or regulatory authority requirements (Eg. BASIX, Mines, Bushfire etc). Designs and plans are copyright protected and remain the property of Montgomery Homes Pty Ltd at all times. Images are for illustrative purposes only. Refer to Tender for pricing or inclusions/exclusions regarding external works i.e. turf, landscaping, driveway, retaining walls, and floor coverings, window furnishings, and light fittings.