



HEREFORD HILL
• LOCHINVAR •

from **\$782,241**

ROBERTSON 217

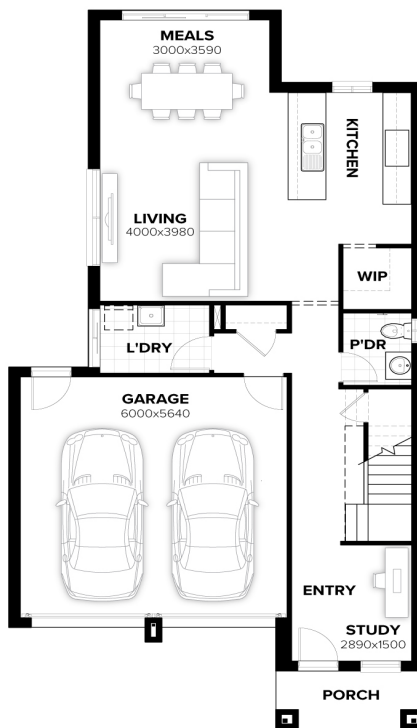
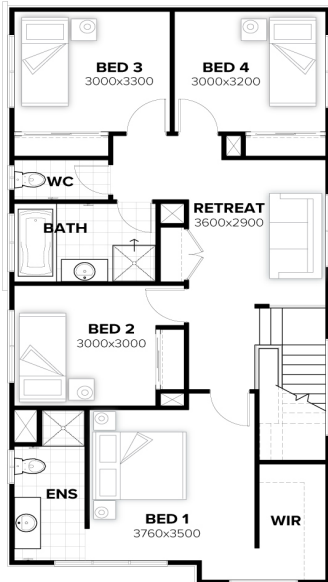
Corella facade

Home size : 23.37 SQ

4 2 2 877 sqm

Lot 501 Herdsman Road, Lochinvar
(Hereford Hill)

- Designer benchtops and overheads to kitchen
- Full floor coverings throughout
- 30 year structural warranty
- Site allowances; council and zone fees
- Free energy assessment (BASIX or ACTHERS)
- 900mm appliances; LED lighting and sliding robes
- Family owned and operated since 1983



Gareth Campbell

0484 667 464

Gareth.Campbell@burbank.com.au
www.burbank.com.au

*Images are for illustrative purposes only and may include upgrade items, fixtures, finishes available at an additional cost. Burbank does not supply items such as furniture, landscaping, fencing and external lighting. Any prices listed do not include the supply of these items. Packages are subject to availability and to the subject to developer's design review panel and council's final approval. Package price excludes stamp duty on land, legal fees and conveyancing costs. For detailed home pricing, please consult a Burbank sales consultant for further information. Burbank reserves the right to alter the images, descriptions, and/or pricing at any time without notice. All designs are the property of Burbank and must not be used, reproduced, copied or varied, wholly or in part without written permission from an authorised Burbank representative. Copyright. Burbank Australia (NSW) Pty Ltd. ABN 88 610 822 770. Builders Registration numbers; NSW BL 295627C and ACT BL 2016566. - Printed on: 7/03/2024

Burbank