

LOT 414, NO.32
TILLAGE DRIVE
HEREFORD HILL, LOCHINVAR

SOUTHPORT 189 | METRO

 4 Beds
  2.5 Baths
  2 Parks
  20.4 Squares
  10.2m Wide

Land Size: 504m²

\$746,888
Including Land:\$359,000

Achievable price without sacrificing quality




HOUSE AND LAND PACKAGE INCLUDES:

- ✓ Designer kitchen
- ✓ Italian made appliance package
- ✓ Taubmans premium paint system
- ✓ Complimentary electrical planning
- ✓ PGH bricks and concrete roof tiles
- ✓ Insulation
- ✓ Corinthian front entry door
- ✓ Alfresco roof and concrete slab
- ✓ Colour-on sealed driveway
- ✓ Turf to front yard and council crossing
- ✓ Letterbox
- ✓ Clothesline
- ✓ TV antenna
- ✓ Light fittings
- ✓ Internal floor covering


Sales Executive
Steve Slisar | 0492 993 123
steve.slisar@montgomeryhomes.com.au



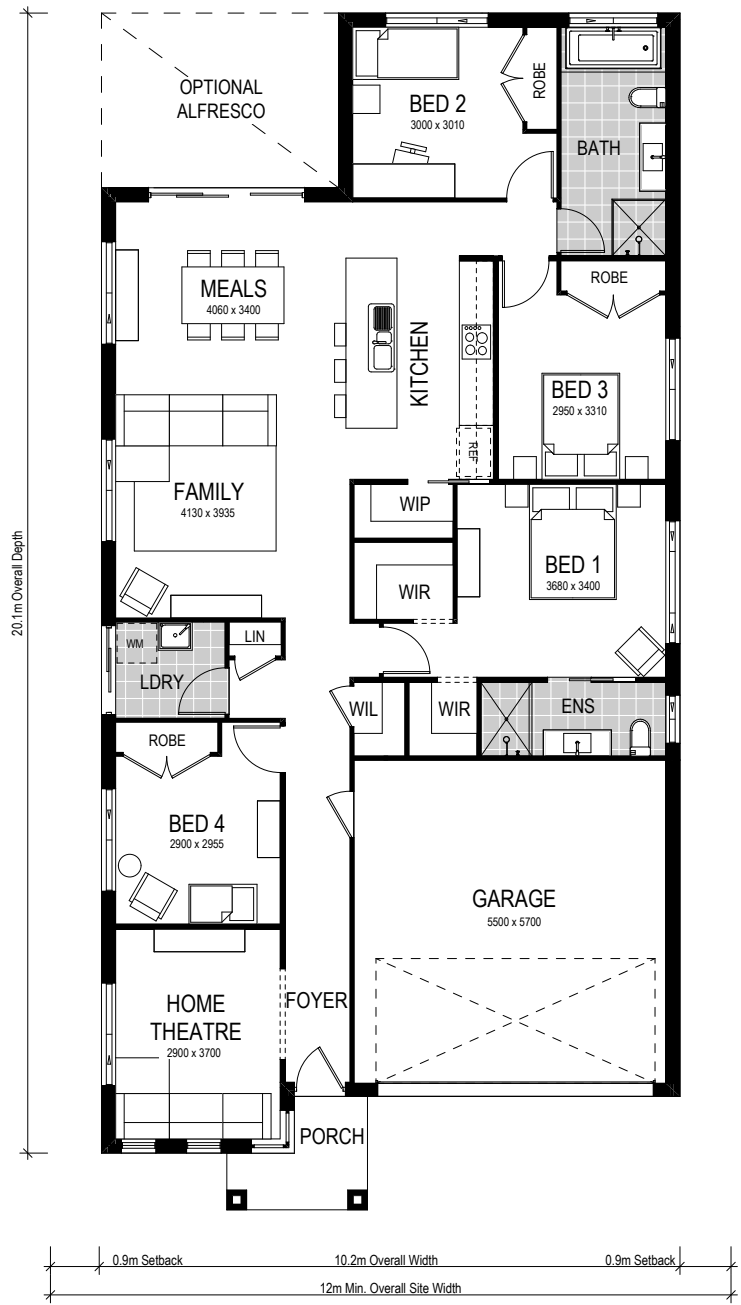
SOUTHPORT 189 | METRO

 4 Beds
  2.5 Baths
  2 Parks

Our Southport 189 is a great family home suitable for a narrow, shallow block yet still provides ample space and style. This modern design benefits from an open plan living space which flows seamlessly from the foyer to the gourmet kitchen, meals room, and family areas. This living area is a beautiful space that connects to the backyard, perfect for year-round entertaining.



- ✓ Complete turnkey items
- ✓ Advantage inclusions
- ✓ Site costs and BASIX
- ✓ Great investment potential
- ✓ First home buyer appeal



CONDITIONS APPLY This is not a final tender. Montgomery Homes reserves the right to revise plans, pricing and specifications without obligation or notice. Pricing is subject to Council and statutory or regulatory authority requirements (Eg. BASIX, Mines, Bushfire etc). Designs and plans are copyright protected and remain the property of Montgomery Homes Pty Ltd at all times. Images are for illustrative purposes only. Refer to Tender for pricing or inclusions/exclusions regarding external works i.e. turf, landscaping, driveway, retaining walls, and floor coverings, window furnishings, and light fittings.