

Inspired Collections

Over 100 additional items included

DREAM HOME DEAL...
UP TO \$60,000 OF UPGRADES
INCLUDING DUCTED AIR
CONDITIONING FOR ONLY \$6,990

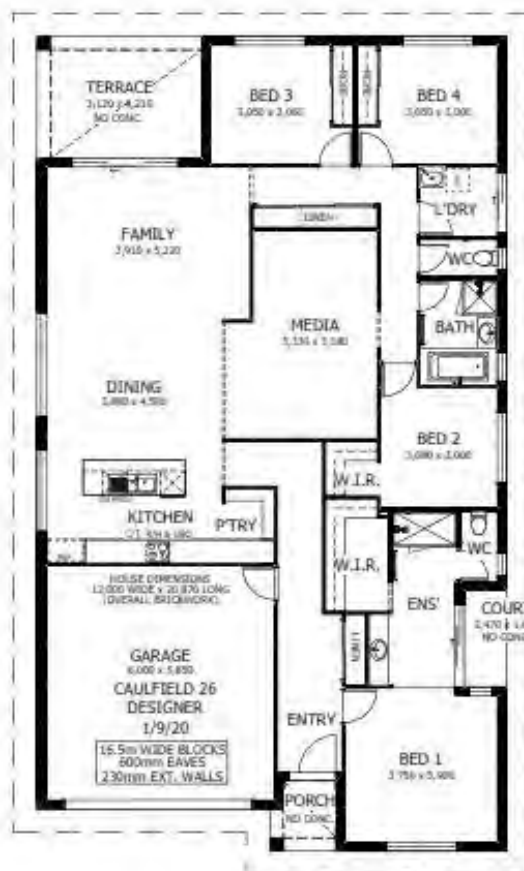
Floor area: 244m² / 26.26sq | Block Size: 652.1m²

Address: Lot 1613, 12 Pasture Place, Lochinvar



Caulfield 26 Package Inclusions

- * DREAM HOME DEAL
- * 26 WEEK BUILD TIME GUARANTEE
- * 12 MONTH FIXED PRICE CONTRACT
- * LAND IS REGISTERED AND READY TO BUILD ON
- * Executive facade
- * Open Plan Living
- * Covered Alfresco
- * Anticon blanket roof insulation
- * Sustainability Collection
- * Perry Homes Standard Inclusions
- * Raised 2590mm Ceilings
- * 'Inspired by You' upgrades (incl. in promotion)
- * Fully Ducted Air Conditioning (incl. in promotion)
- * All internal floor coverings
- * Flyscreens to all windows & sliding doors
- * Wall mounted clothesline, TV antenna & Letterbox
- * Coloured concrete allowance to driveway, porch & terrace
- * Site Works and BASIX allowance including Council lodgement (subject to Contour Survey)



Ben Hancock

0435 956 546

ben.hancock@perryhomes.com.au

www.hunterregionhouseandland.com.au

Noel Simmonds

0418 169 800

noel.simmonds@perryhomes.com.au

www.hunterregionhouseandland.com.au



"Disclaimer: Due care has been taken with the siting, design and pricing of the proposed dwelling based upon current information and is correct at time of publication. This however, may change as a result of other influences such as; developer covenants, local, state or federal government requirements etc. Also, undetermined site conditions such as; tree removal, acoustics, bushfire, rock etc. may be excluded unless otherwise specified. Terms and conditions apply to campaigns and special offers. Plans and images are for illustrative purposes only and may depict features such as landscaping, furniture, window furnishings and lighting that are not included in the package price or which are not available from Perry Homes. Land price is correct at time of printing and subject to change without notice. Perry Homes reserve the right to withdraw this package at any time without notice. Perry Homes (Aust) Pty Ltd. QBCC Act Lic. No. 718748 NSW Lic No. 110970C."