

HUNTER HOMES

live WITH HEART 

LOT 1611, Dairyman Drive
LOCHINVAR, NSW

Land 478.3m²

\$752,707 *

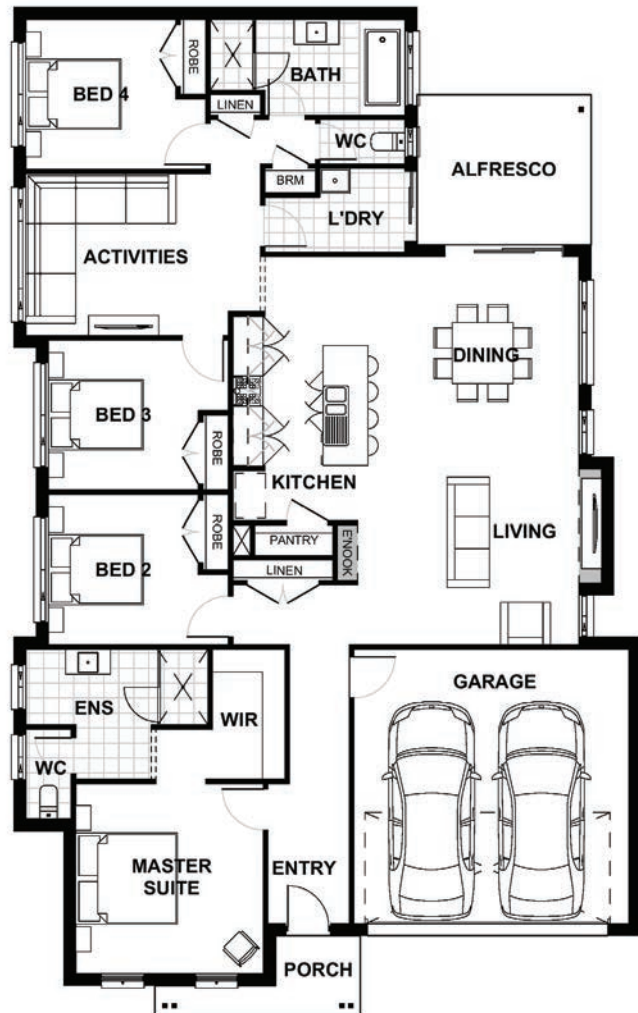
HILLSBOROUGH FACADE

 4  2  2

Total (sqs.)	23.59	Width (m)	12.54
Total (m ²)	219.12	Length (m)	20.17

Contact Jackie Wasley
0400 623 852 jackie@hunterhomesnsw.com

Features & Inclusions



Terms and Conditions: Images shown on this brochure are approximate and for illustration purposes only, these plans may not be drawn to scale. Façades and other images on this brochure may be shown as optional upgrades or not included, additional fixtures and finishes that are featured on this document may not be included in the base cost such as landscaping, tiling, decking, furniture, feature lighting, pools, driveways etc. Land estate pricing is subject to the developers guidelines. Hunter Homes reserves the right to change plans and inclusions at any time. This package is subject to council approval. All designs that are developed remain the property of Hunter Homes Pty Ltd under copyright law & we retain & claim all rights to these plans. Changing plans by 50% or more does not avoid legal responsibility for a copyright breach.

See our website for Display locations
1300 BUY HOME www.hunterhomesnsw.com

 **HEREFORD HILL**
• LOCHINVAR •

House and Land - Sienna 219