



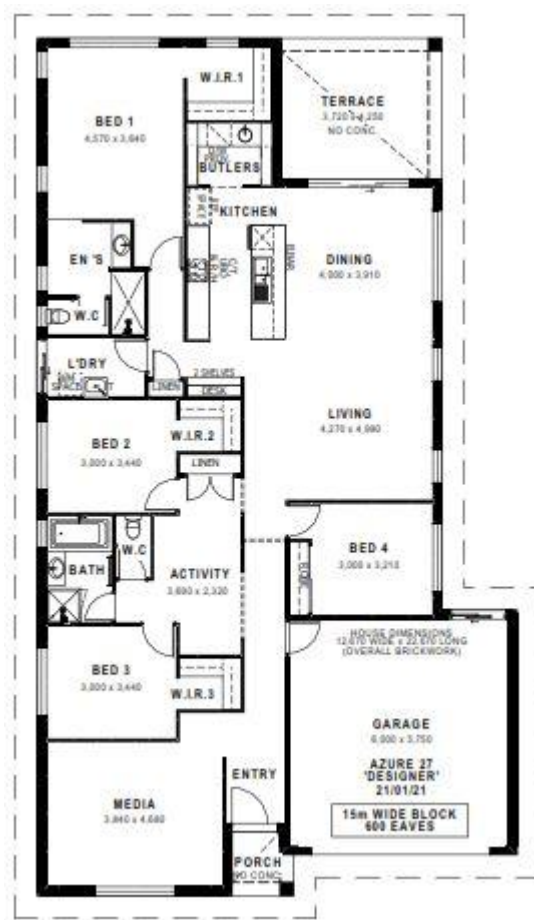
Image may depict upgrades that are not included in the pricing.

Floor area: 250.74m² / 26.99sq | Block size: 617.7m²
Address: Lot 1504 Eloura Street, Lochinvar



Azure 27 Package Inclusions

- * Contemporary Facade
- * Enhance Collection
- * Envy Collection
- * Retreat Collection
- * Indulge Collection
- * Inspired finishes
- * Sustainability Collection
- * Anticon blanket roof insulation
- * Perry Homes 'Standard Inclusions'
- * Fully Ducted Air Conditioning
- * All internal floor coverings
- * Flyscreens to all windows and sliding doors
- * Wall mounted clothesline
- * TV antenna and Letterbox
- * 2590mm ceiling height
- * Concrete allowance to driveway, porch & terrace
- * Allowance for late registration date
- * Site Works and BASIX allowance including Council lodgement (subject to Contour Survey)



Ben Hancock
0435 956 546

ben.hancock@perryhomes.com.au
www.hunterregionhouseandland.com.au

Jordan Maffey
0423 263 449

jordan.maffey@perryhomes.com.au
www.hunterregionhouseandland.com.au



"Disclaimer: Due care has been taken with the siting, design and pricing of the proposed dwelling based upon current information and is correct at time of publication. This however, may change as a result of other influences such as; developer covenants, local, state or federal government requirements etc. Also, undetermined site conditions such as; tree removal, acoustics, bushfire, rock etc. may be excluded unless otherwise specified. Terms and conditions apply to campaigns and special offers. Plans and images are for illustrative purposes only and may depict features such as landscaping, furniture, window furnishings and lighting that are not included in the package price or which are not available from Perry Homes. Land price is correct at time of printing and subject to change without notice. Perry Homes reserve the right to withdraw this package at any time without notice. Perry Homes (Aust) Pty Ltd. QBCC Act Lic. No. 718748 NSW Lic No. 110970C."