

# HUNTER HOMES

live WITH HEART 



**\$341,233\***

## SUMMERHILL FACADE

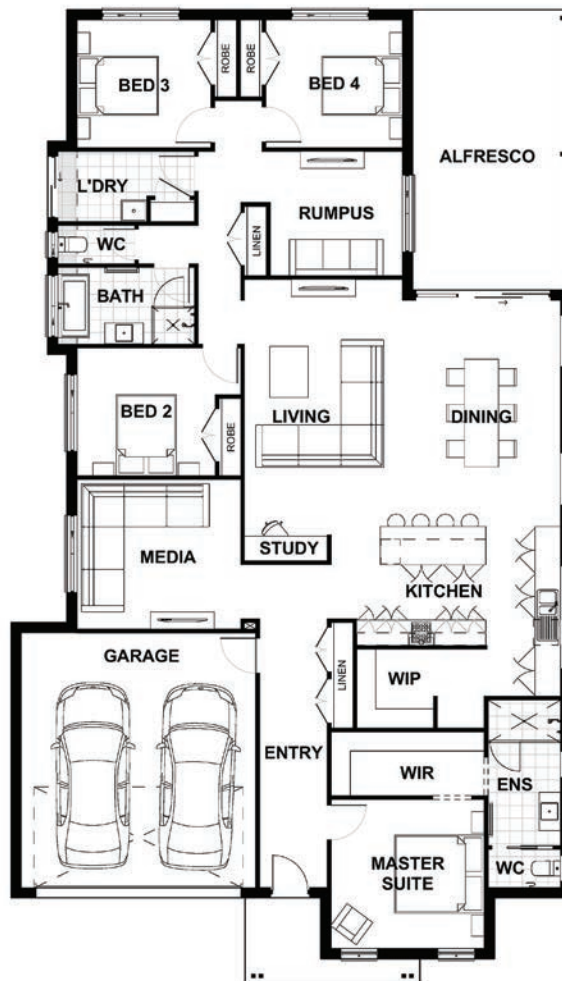
 4  2  2

Total (sq.)	28.97	Width (m)	13.13
Total (m <sup>2</sup> )	269.13	Length (m)	22.89

Contact **Rebecca Sanders**  
0427 529 127 [bec@hunterhomesnsw.com](mailto:bec@hunterhomesnsw.com)

### Features & Inclusions

- ✓ READY TO LIVE PROMOTION
- ✓ Carpet and Tiles
- ✓ Driveway, Patio & Alfresco Concrete
- ✓ Fujitsu Ducted Air Conditioning
- ✓ Fisher & Paykel Dishwasher, Oven, Cooktop, Washer & Dryer
- ✓ 20mm Stone Bench Tops
- ✓ Soft Close Cabinetry
- ✓ Freestanding Bath
- ✓ Wall Hung Vanities
- ✓ Colorbond Roof
- ✓ Downlights
- ✓ Flyscreens to windows
- ✓ Standard Site costs & BASIX
- ✓ Local Builder/Local Trades



Terms and Conditions: Images shown on this brochure are approximate and for illustration purposes only, these plans may not be drawn to scale. Facades and other images on this brochure may be shown as optional upgrades or not included, additional fixtures and finishes that are featured on this document may not be included in the base cost such as landscaping, tiling, decking, furniture, feature lighting, pools, driveways etc. Hunter Homes reserves the right to change plans and inclusions at any time. This package is subject to council approval. All designs that are developed remain the property of Hunter Homes Pty Ltd under copyright law & we retain & claim all rights to these plans. Changing plans by 50% or more does not avoid legal responsibility for a copyright breach.

House Only - Mooring 259 Front Master