



Image may depict upgrades that are not included in the pricing.

Floor area: 244m² / 26.23sq | Block Size: 487m²
Address: Lot 311 Bushel Street, Lochinvar



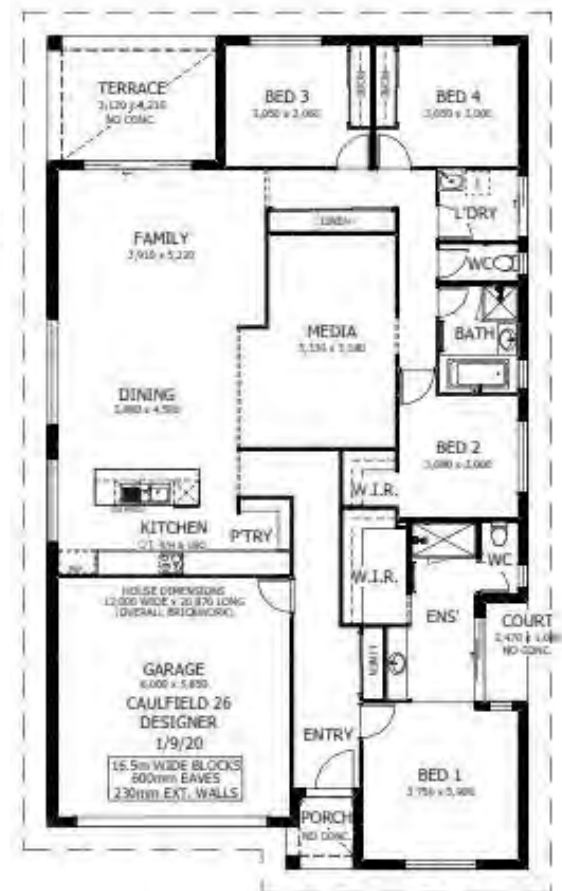
Caulfield 26 Package Inclusions

"ASK US ABOUT OUR CURRENT PROMOTIONS"

- * Executive facade
- * Covered Alfresco
- * Perry Homes 'Standard Inclusions'
- * Flat profile roof tiles
- * Upgraded Designer Kitchen with stainless steel appliances
- * 'Reconstituted' stone benchtops to Kitchen
- * Fully ducted Air Conditioning
- * All internal floor coverings
- * Flyscreens to all windows and sliding doors
- * Wall mounted clothesline
- * Letterbox
- * TV antenna
- * Concrete allowance to driveway, porch, court and terrace
- * Allowance for late registration date
- * Site Works and BASIX allowance, including Council Lodgement (subject to Contour Survey)



HEREFORD HILL
• LOCHINVAR •



Vicki Schroeder
02 4081 4824

vicki.schroeder@perryhomes.com.au

www.hunterregionhouseandland.com.au

Noel Simmonds
0418 169 800

noel.simmonds@perryhomes.com.au

www.hunterregionhouseandland.com.au



"Disclaimer: Due care has been taken with the siting, design and pricing of the proposed dwelling based upon current information and is correct at time of publication. This however, may change as a result of other influences such as; developer covenants, local, state or federal government requirements etc. Also, undetermined site conditions such as; tree removal, acoustics, bushfire, rock etc. may be excluded unless otherwise specified. Terms and conditions apply to campaigns and special offers. Plans and images are for illustrative purposes only and may depict features such as landscaping, furniture, window furnishings and lighting that are not included in the package price or which are not available from Perry Homes. Land price is correct at time of printing and subject to change without notice. Perry Homes reserve the right to withdraw this package at any time without notice. Perry Homes (Aust) Pty Ltd. QBCC Act Lic. No. 718748 NSW Lic No. 110970C."