



Kingscliffe 40 | Saville

1-1 6 | 2.5 | 2



Hereford Hill

Lot 207 Tillage Dr, Lochinvar NSW 2321

\$606,200

Includes site costs



Ground Floor Plan



First Floor Plan



HEREFORD HILL
• LOCHINVAR •

Land Size: 507.00

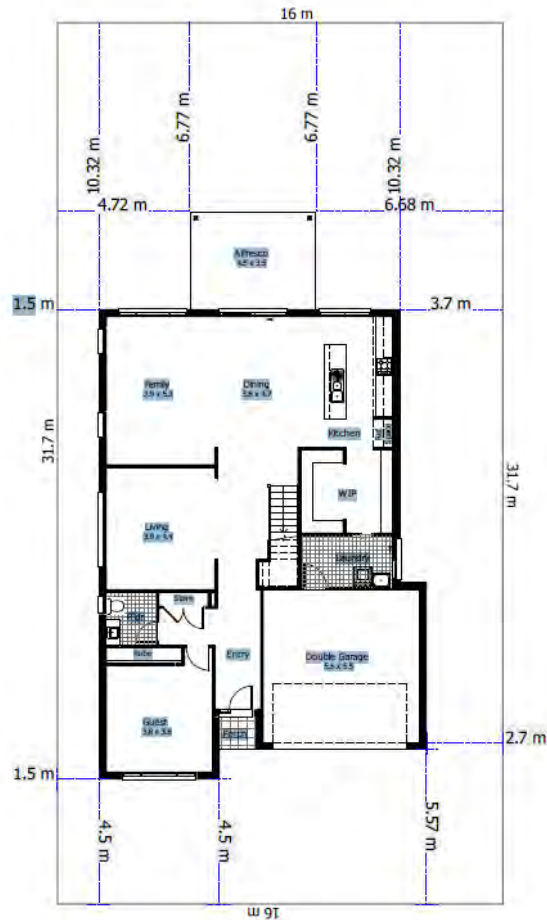
Registration: TBA

Estate: Hereford Hill

Madison Pymble
Ph: 0423 634 786

Fits blocks from 14.00m wide

House Length: 20.00m	Garage: 34.00m ²	Ground Floor: 145.00m ²	Total Area M ² : 371.61m ²	Land Size M ² : 507.00m ²
House Width: 12.00m	Porch: 0.00m ²	First Floor: 173.00m ²		



Package Includes

- Classic Facade
 - Aluminium Stacker Door
 - Kitchen Pack
 - Fixed Site Costs
 - Roof Sarking
 - Flooring Pack
 - Hybrid Frame
 - Thermal Pack
 - \$30,000 already reduced off the package price for the current Essential Collection promotion
- AND MUCH MORE...**

Our Professional and Friendly Sales Team will guide you through the processes. Visit one of our Display Homes near you!

Display Centres Open 7 Days 10am - 5pm



13 HOMES
ONE LOCATION

Super Centre Parklea
9629 4999

Billy's Lookout
8850 9169

Box Hill
8851 6710

Calderwood
8850 9980

Cronulla
8850 9975

Forestville
8850 9965

Harvest
8850 9987

Marsden Park
8850 9066

Oran Park
8850 9067

Thornton
8850 9160

Warriewood
8850 9180

Willowdale
8850 9960

Clarendon.com.au